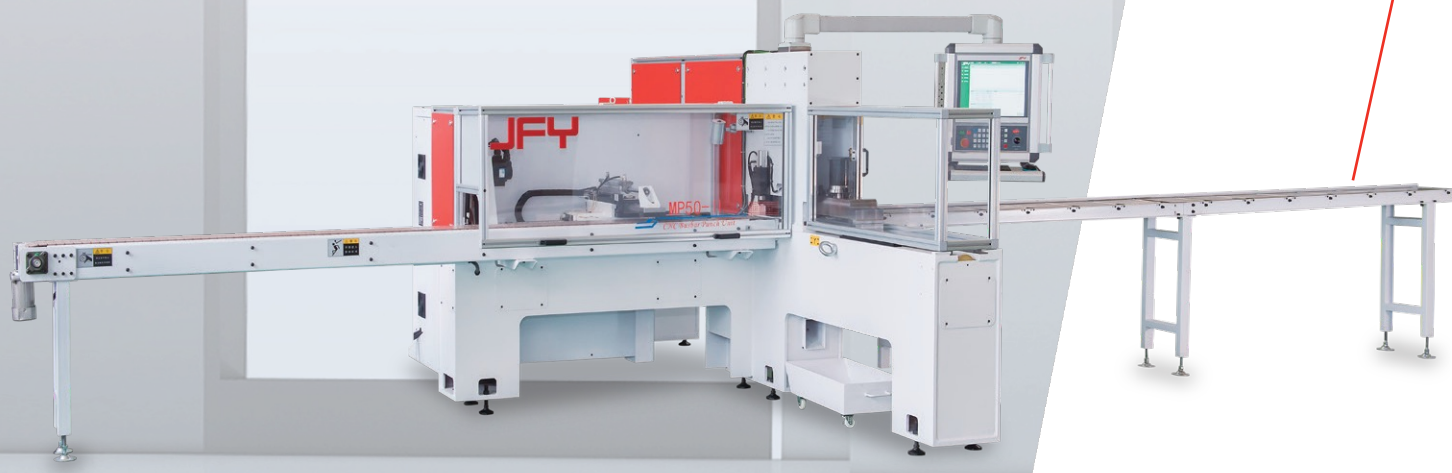


MP50 Busbar Punching Machine

The professional machine for processing busbars, including punching, cutting, embossing, etc.



01 Innovative design

The new T-shaped structure not only provides a compact appearance but also enhances the overall aesthetic appeal

02 Multifunctional integration

Supports configurations of 7+1+1 and 8+1 tool stations, which allows not only punching operations but also cutting, embossing, and other functions, providing high processing efficiency and flexibility

03 High stability

Combines a high-frequency, low-noise, and low-oil-temperature hydraulic workstation with mechanical transmission, ensuring high compatibility and continuous production

JFY

Professional and stable

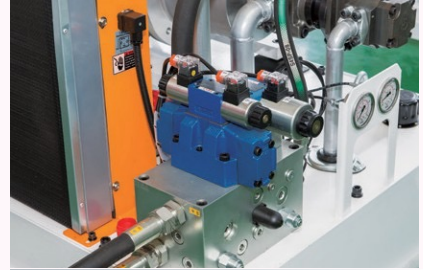
The professional busbar punching machine for clamping, processing, and cutting busbar parts.



Control System



Punching Tooling



Hydraulic System

MP50 Busbar Punching Machine

Item	Unit	Parameter
Nominal force	kN	500
Max. positioning speed [X/Y axis]	m/min	80
Max. feeding stroke [X axis]	mm	1000
Max. tooling movement stroke [Y axis]	mm	1350
Max. punching tooling movement stroke [V axis]	mm	350
Max. punching frequency	hpm	120
Tooling stations	piece	7+1+1 [optional 8+1]
Controlled Axes	number	3
Pitching accuracy	mm	$\pm[0.1+[L/4000]]$ mm [Within ± 0.2 mm for $L \leq 400$]
Max. plate thickness for punching	mm	15 mm for copper, 10 mm for steel
Workpiece size [L * W]	mm	6000 * 200
Max. punching diameter	mm	$\Phi 35$ mm for copper bars
Max. cylinder stroke	mm	60
Max. cutting width	mm	200 mm for copper bars
Max. embossing area	mm ²	160 * 80
Max. hydraulic pressure	bar	270
Air pressure	Mpa	0.6
Dimensions [L * W * H]	mm	8500 * 4864 * 1800

Jiangsu Jinfangyuan CNC Machine Co., Ltd.

Address: 168 South Jian Road, Hanjiang District, Yangzhou, PRC

Phone number: 0514-80522307

Service: service-international@jinfangyuan.com

Website: www.jfy-international.com

